



Restoring vegetation in degraded wetlands

Denise Crosbie
Cockburn Wetlands Education Centre

OUR ORGANISATION











EARLY REVEGETATION EFFORTS

5 September 1999



Total seedlings	=	5,285
Total species	=	11

Life Form	%
Trees/tall shrubs	69
Med/low shrubs	12
Sedges	19



Watering?

October 2001



July 1999



September 1999



October 1999



January 2006



23 November 2005



BASELINE STUDIES



1948



DOLA

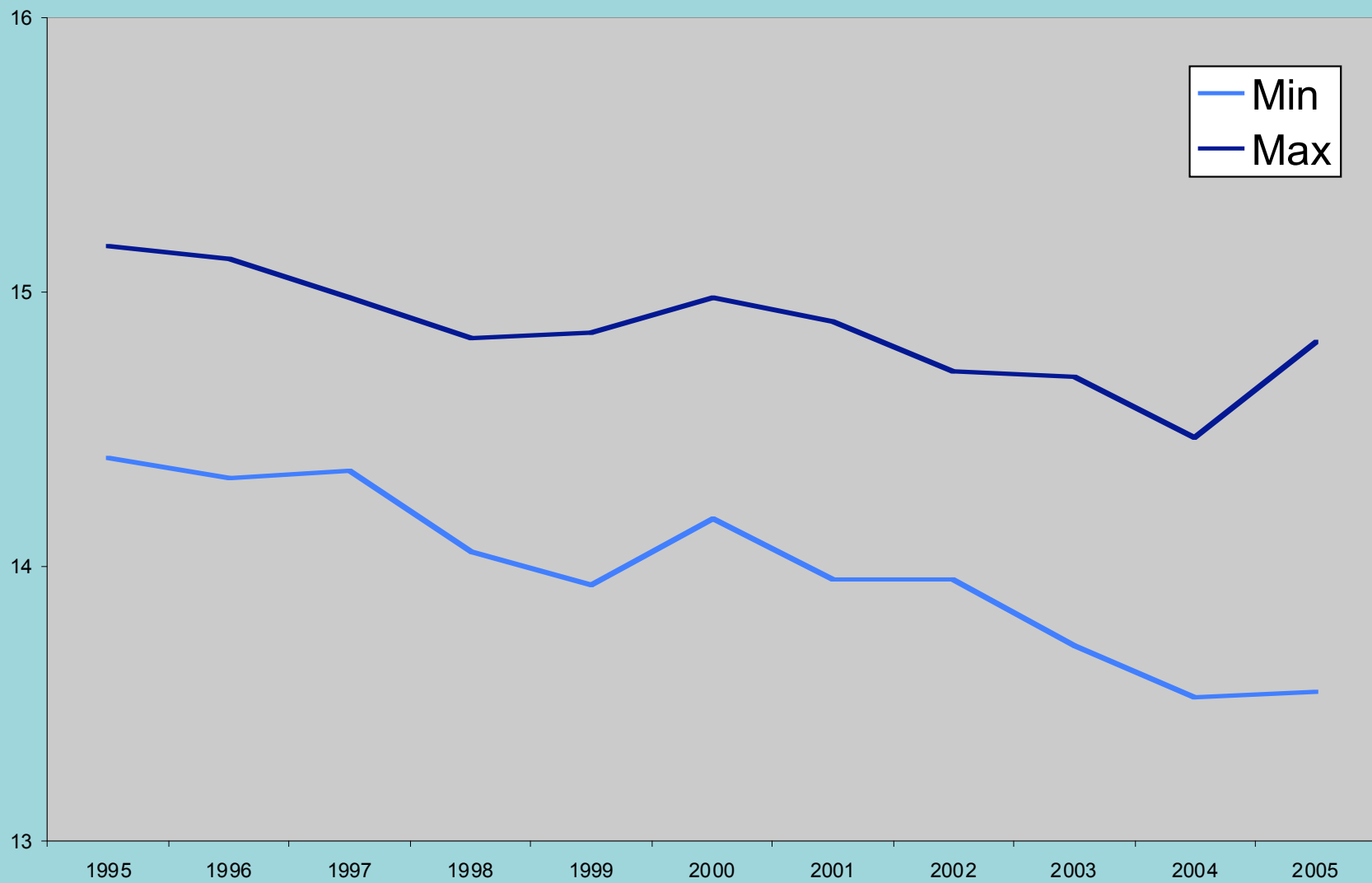
2005



City of Cockburn

Tassel sedge (*Carex fascicularis*)



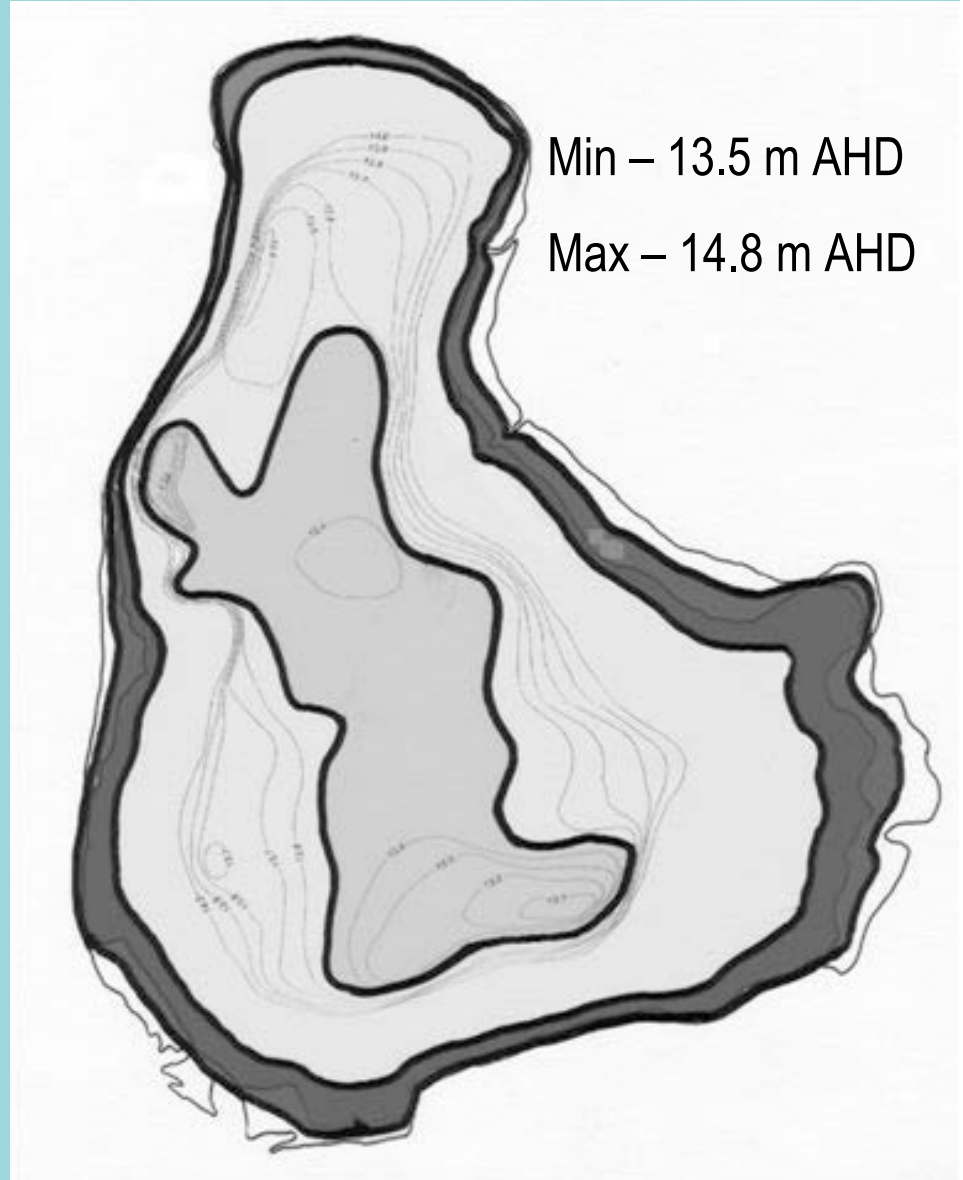
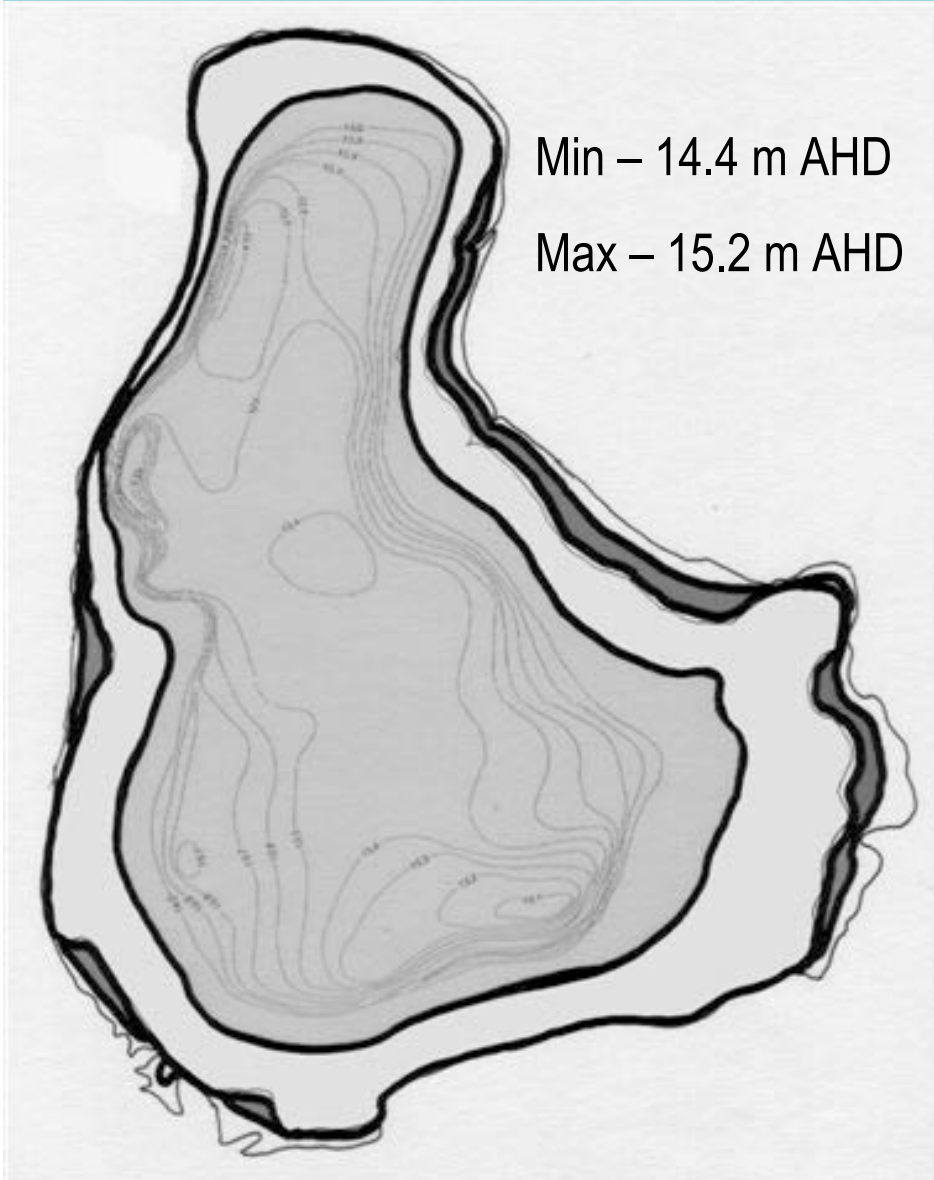


State of WA (Dept. of Environment)

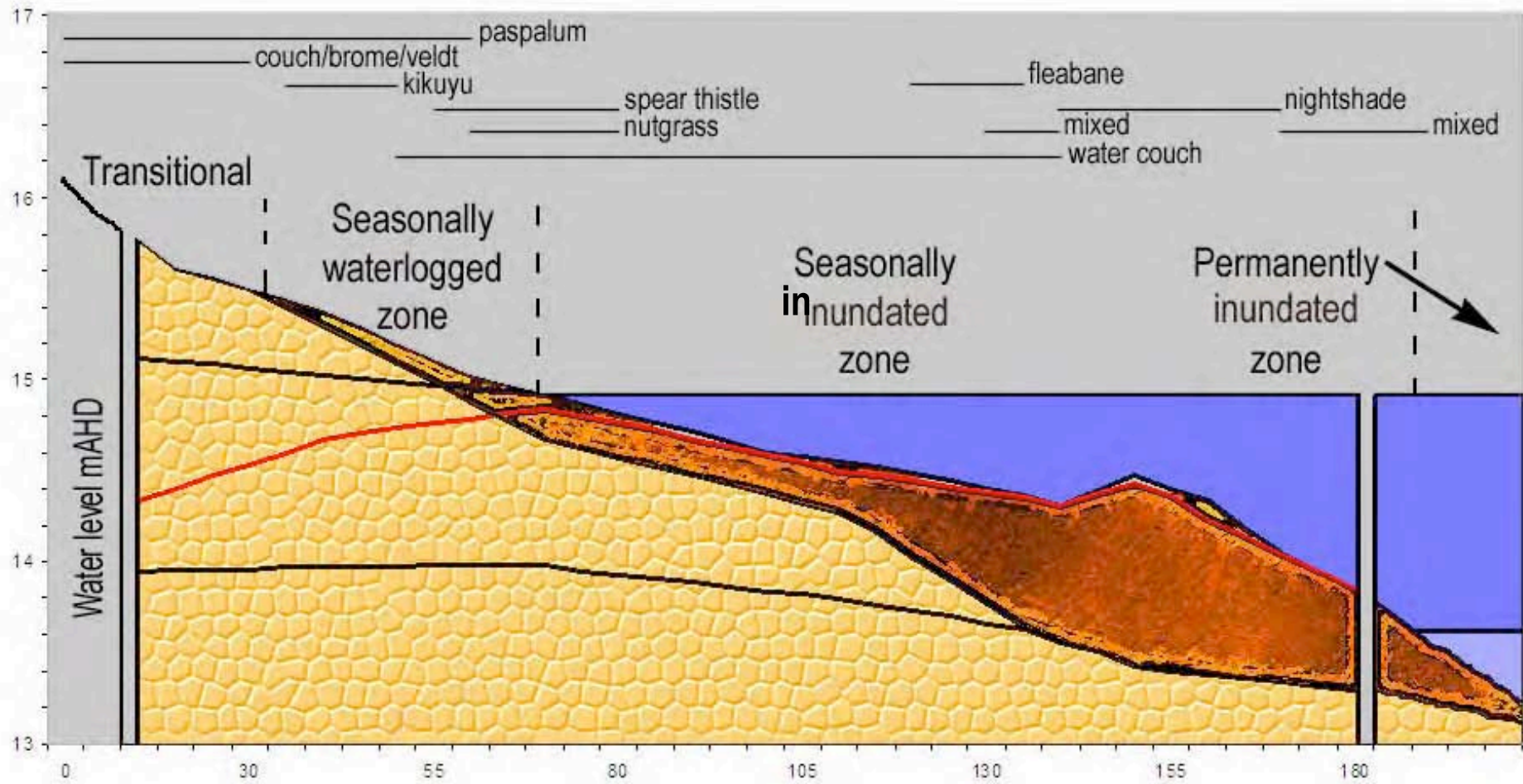
Zonation

1995

2005







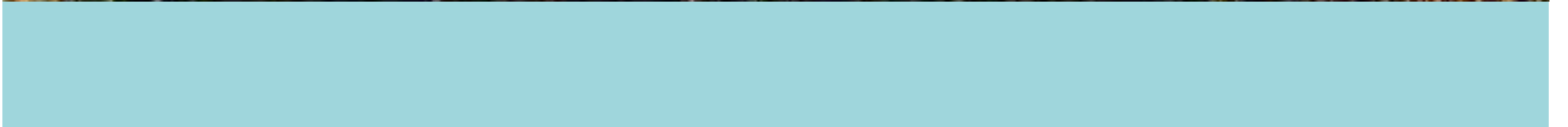
October 1994













Wetland seed production area (Wet SPA)



Established August 2005

Photo taken yesterday

SITE PREPARATION



18 August 2005



4 January 2006



03 April 1997

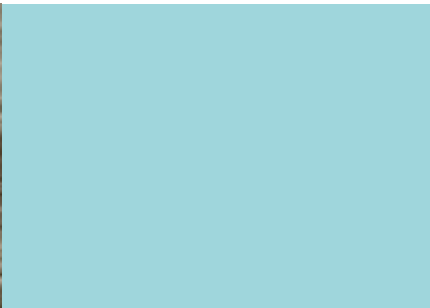


22 January 2006



27 January 2005

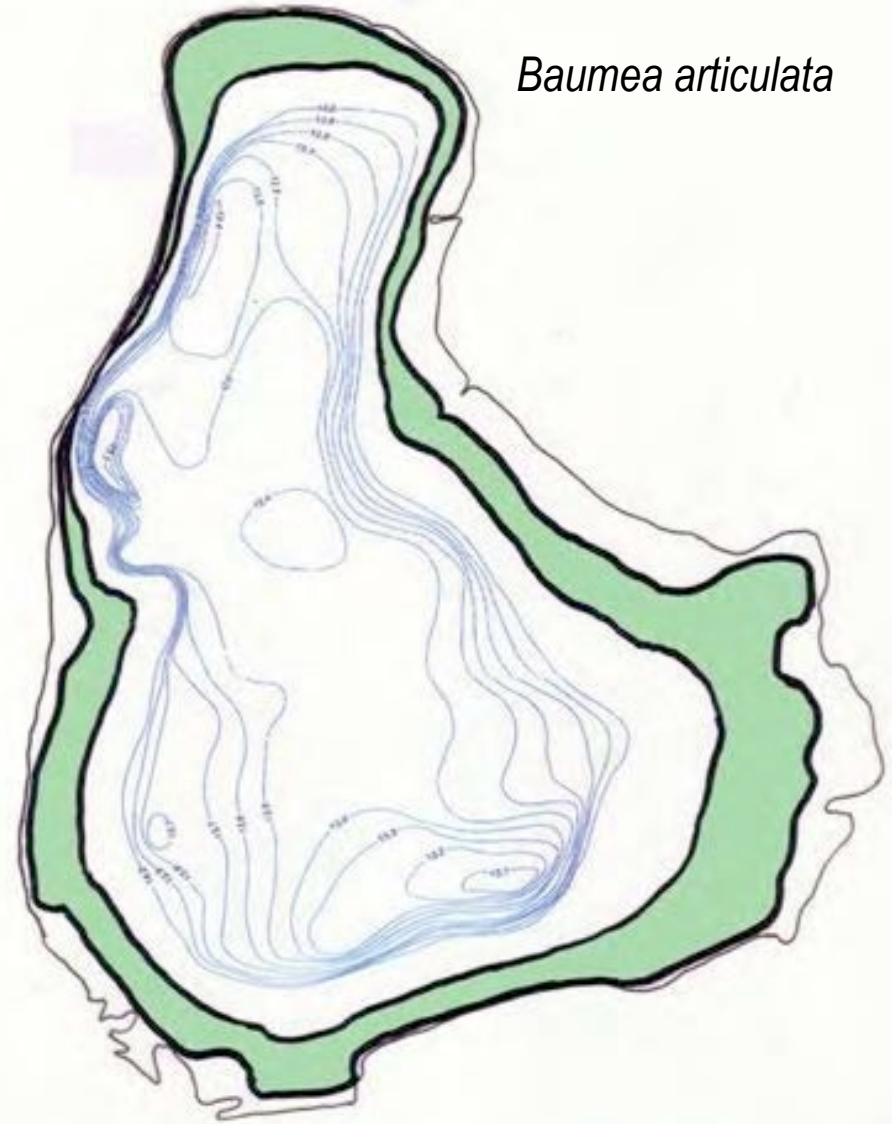


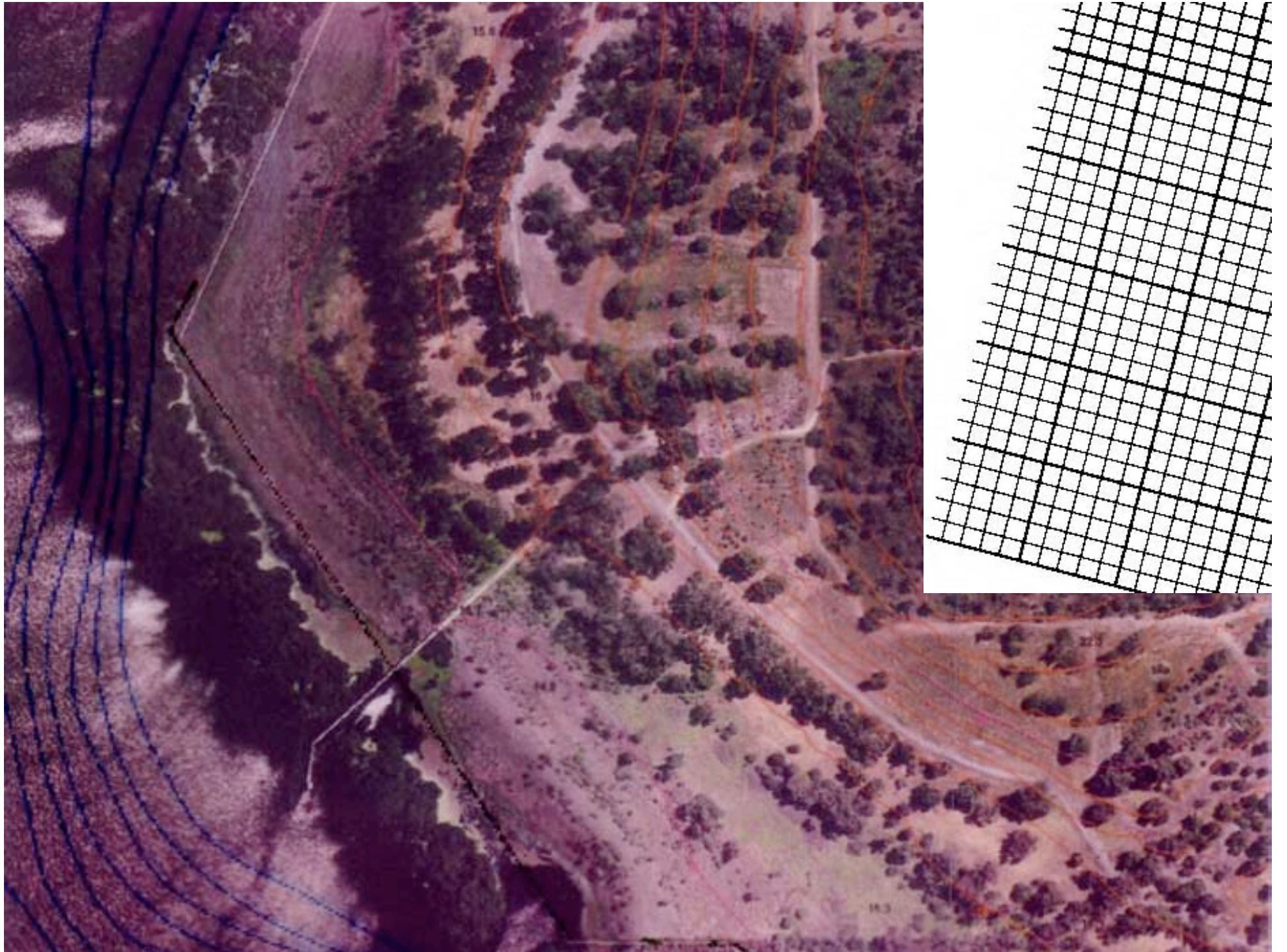


Seed bank germination trials



REVEGETATION





			14-15th contour (587m2)		15-16th contour (793 m2)	
Life Form	Scientific name	Plants/ m2	No of plants	Total Area m2	No of plants	Total Area m2
TALL SHRUBS (3-5 metres tall)						
	<i>Acacia pulchella</i>	1	30	30		0
	<i>Agonis linearifolia</i>	1.5	100	67		0
			130	97	0	0
PERENNIAL HERBS						
	<i>Baumea juncea</i>	8	550	69		0
	<i>Patersonia occidentalis</i>	5	30	6		0
		Subtotals	580	268	0	0
		TOTALS	710	365	0	0



05 February 2004



23 December 2004



04 January 2006



23 February 2006



30 March 2006



28 November 2006



17 April 2007







Frost!

MAINTENANCE

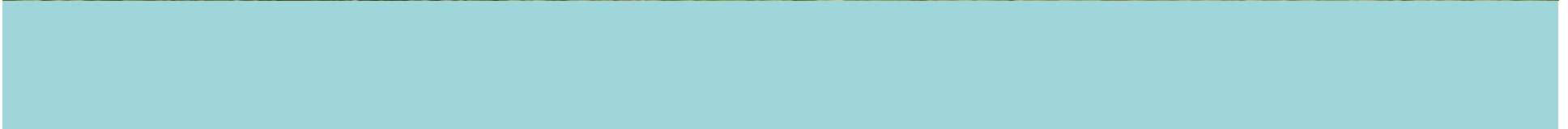


Weeding













23 September 2005



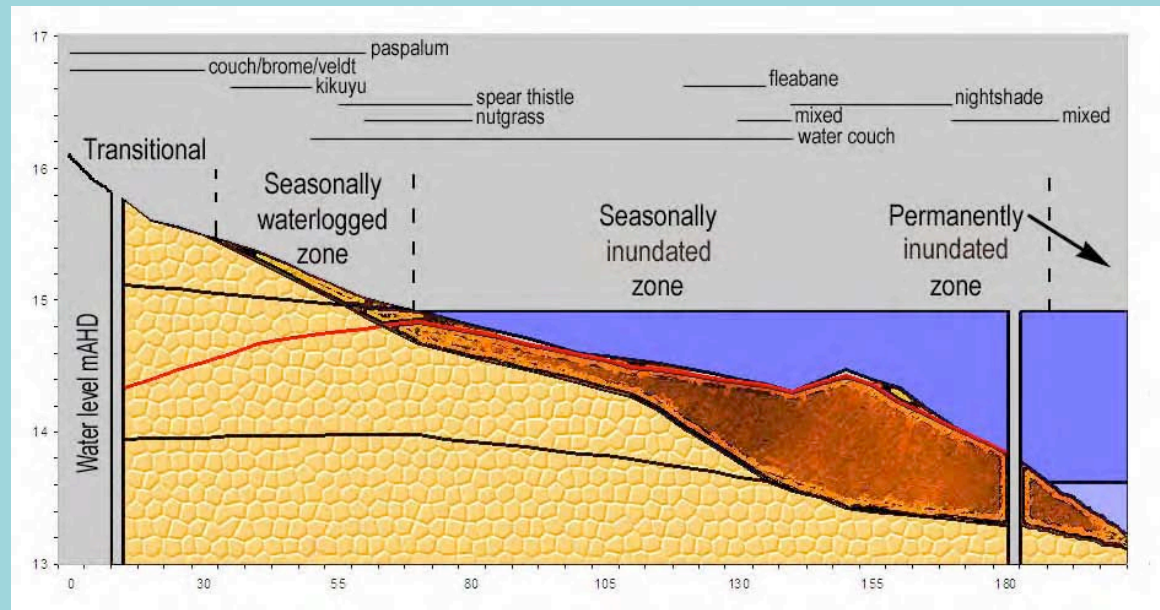
28 November 2006



11 November 2005



Watering







28 January 2005



18 August 2005



11 November 2005



20 December 2005











